



## Dmed® hx 35 P FX

### Technical data

Fitted with (flood):	1 × halogen bulb 12 V/35 W/38°
Luminous power (flood):	approx. 6000 lux/0,5 m
Fitted with (spot):	1 × halogen bulb 12 V/35 W/10°
Luminous power (spot):	approx. 32 000 lux/0,5 m
Work equipment:	Electronic transformer
Supply voltage:	230 V/50 Hz AC
Mains lead:	approx. 1,4 m
Lamp housing:	Polyamide
Weight (net):	approx. 1,3 kg
Power consumption:	approx. 40 W
Switch:	Rocker switch
Connection method:	Single-pole, secondary, I-O-II
Articulation-joint balancing:	Spring
Class of protection:	II
Pin Ø:	16 mm-W
Fastening:	Table, wall, rail, roller stand see Page 65/66
Standards:	EN 60601-1, EN 60601-2-41

### Order No.

- D13.134.000 – 38° Flood, pure white, RAL 9010,  
European-Standard plug
- D13.899.000 – 10° Spot, pure white, RAL 9010,  
European-Standard plug
- D13.426.000 – 38° Flood, pure white, RAL 9010, UK-plug
- D14.635.000 – 10° Spot, pure white, RAL 9010, UK-plug

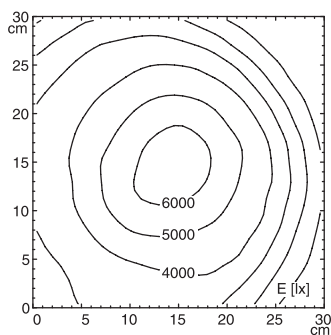
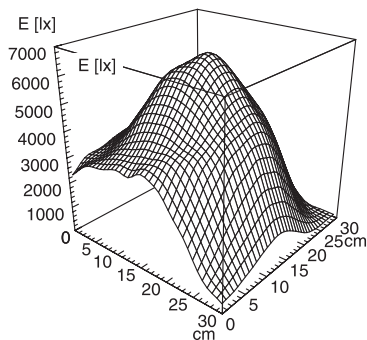
### Spare lamps

- D68.745.000, 38° Flood
- D99.210.000, 10° Spot

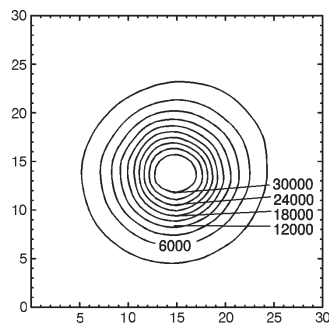
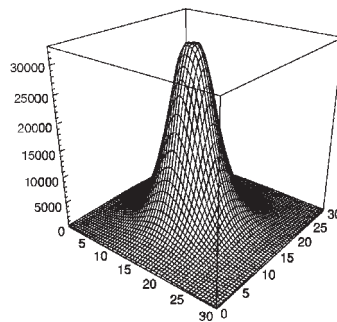


### Light distribution

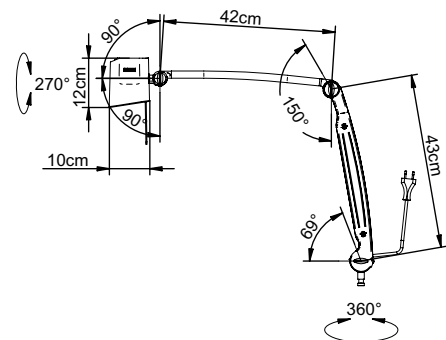
Emission angle 38°



Emission angle 10°



### Technical drawing





## Dcare® medicool 14 P F1

### Technical data

Fitted with:	1 × 14 W TC-EL FCY
Work equipment:	Ballast
Supply voltage:	230–240 V/50 Hz AC
Mains lead:	approx. 3 m
Lamp housing:	Polycarbonate
Weight (net):	approx. 1.4 kg
Power consumption:	approx. 14 W
Switch:	Rocker switch
Connection method:	Single-pole, primary, I-O
Articulation-joint balancing:	Spring
Class of protection:	II
Pin Ø:	16 mm-W
Fastening:	Table, wall, rail, universal bed adapter, see Page 65/66/67
Special features:	Separate light strip for orientation
Standard:	EN 60598-1, EN 60598-2-25

### Order No.

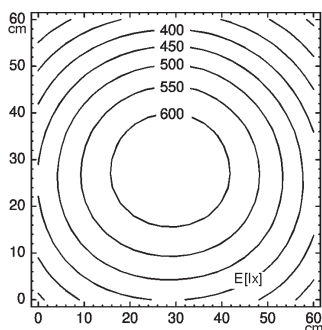
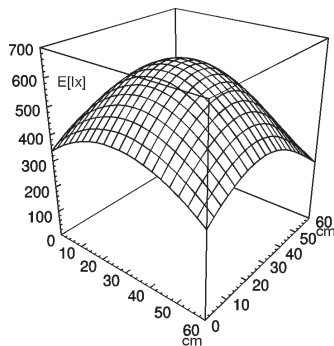
- D14.196.000 – pure white, RAL 9010, European-Standard plug
- D14.197.000 – silver, RAL 9006, European-Standard plug
- D14.210.000 – pure white, RAL 9010, UK plug
- D14.211.000 – silver, RAL 9006, UK plug

### Spare lamp

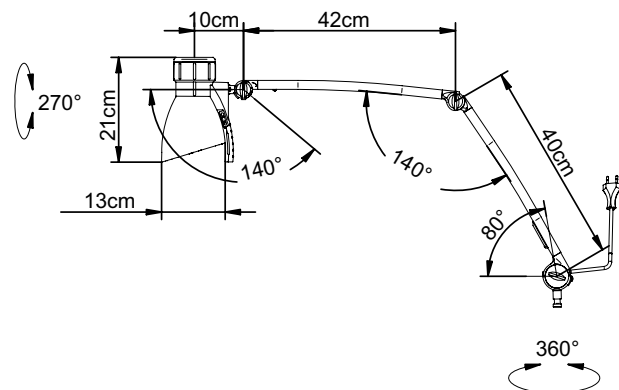
- D68.880.000



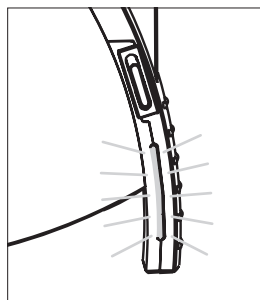
### Light distribution



### Technical drawing



### Light stripe for orientation



## Standard 25 × 10 mm wall rail system



### Technical data

Material: Aluminium

Finish: Natural-anodised

Dimensions: 25 × 10 mm, length 1 m and 1,5 m

Weight (net): approx. 2,5 kg

Standard: EN 12218

### Order No.

- D13.505.000 – Rail length 1 m, including 2 fixtures
- D13.506.000 – Rail length 1,5 m, including 3 fixtures
- D56.045.000 – Double fixture 80 mm to rail, compl.
- Project-specific lengths on request, possible up to 6 m

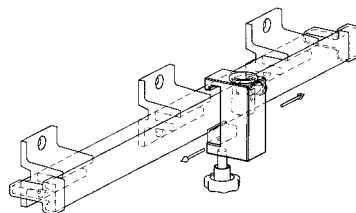
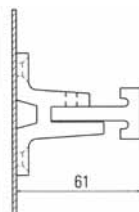
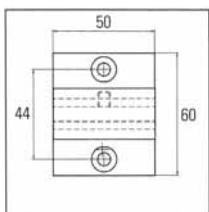
The Derungs wall rail can be fitted easily in any rooms and offers an excellent attachment for Derungs medical lamps, accessories and other medical equipment.

This renders the lamps, accessories and other medical equipment flexible in relation to position and they can be adapted to the relevant application. The workplace can thus be configured ergonomically and optimally for the user.

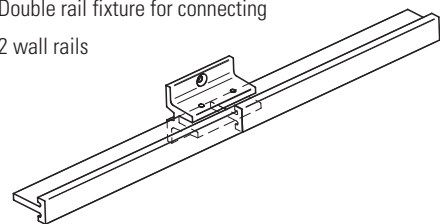
Easy slidability of the reading lamps and examination lamps allows flexible arrangement of the beds, thus creating more free space and greater space for other equipment at the patient's bedside. The wall rail can also be attached easily to other medical equipment such as medical care equipment, respiration equipment, anaesthetics workstations, mobile trolleys and beds. There are no limits to use of the wall rail.

The European Standard stipulates fundamental requirements in order to ensure compatibility between rail systems and medical equipment. The Derungs wall rail and our accessory products are developed and produced in accordance with Standard EN 12218. The rugged design of the wall rail allows a high loadbearing capacity. The surface of the wall rail is anodised and can thus be easily cleaned and protected against oxidation. Fastening: the wall rail can be mounted very easily on any firm base surface.

### Technical drawing



Double rail fixture for connecting  
2 wall rails



## Table clamp



### Technical data

Material: Polyamid steel  
 Finish: coated  
 Adjustable range: 0–70 mm  
 Weight (net): 0,350 kg  
 For Pin Ø: 16 mm-W  
 with removal guard

### Order No.

– D14.228.000 – black

## Universal mount



### Technical data

Material: Polyamide GF  
 Dimensions: 60 × 60 × 60 mm  
 Weight (net): approx. 0,09 kg  
 For Pin Ø: 16 mm-W  
 with removal guard

### Order No.

– D13.430.000 – pure white, RAL 9010

## Rail mount



### Technical data

Finish: Natural-anodised  
 Equipment rail: 25–35 × 8–10 mm  
 Weight (net): approx. 0,16 kg  
 For Pin Ø: 16 mm-W  
 with removal guard

### Order No.

– D13.269.000

## Wall mount



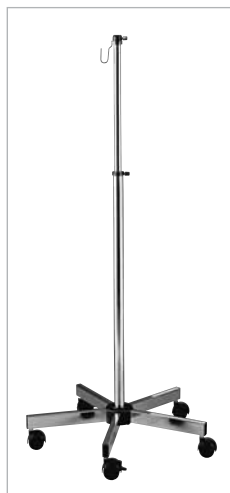
### Technical data

Material: Polyamide GF  
 Weight (net): approx. 0,14 kg  
 For Pin Ø: 16 mm-W  
 with removal guard  
 with cable outlet

### Order No.

– D13.231.000 – pure white, RAL 9010

## Roller stand R Teleskop



### Technical data

Material: stainless steel  
 Finish:  
 – Tube: polished  
 – Foot: high gloss chrome-plated  
 – Casters: twin plastic casters,  
 with 2 brakes  
 Dimensions: 0,8–1,4 m  
 Weight (net): approx. 7,05 kg  
 For Pin Ø: 16 mm-W  
 with removal guard  
 with cable suspension device

### Order No.

– D13.365.000

## Roller stand RL



### Technical data

Material: stainless steel  
 Finish:  
 – Tube: polished  
 – Foot: plastic with loaded base  
 – Casters: twin plastic casters,  
 with 2 brakes  
 Dimensions: 0,8 m  
 Weight (net): 4,7 kg  
 For Pin Ø: 16 mm-W  
 with removal guard  
 with cable suspension device

### Order No.

– D14.022.000